

# Wudhus News

DECEMBER 2017/JANUARY 2018

HORSLEY WOODHOUSE PC

## Land Opposite the Doctors Gardening Scheme – spotted any changes??

For those of you who have used the western entrance to the Village or simply been to the Doctors in the last few weeks you will see that the Parish Council have started to fulfil their pledge of improvement works on the Land opposite the Doctors (LODGS).

So far we have begun by clearing the ground and grass seeding from the bus shelter towards the traffic lights. This has been achieved with sponsorship from Derby College and also Geoff Cox Cars.



Derby College have kindly offered to provide further labour and expertise to design and implement a landscaped planting scheme on this piece of land, in order to enhance the western approach to the village, which I am sure every reader will agree is greatly overdue. Further clearing works are planned this year, however as we are heading towards the end of the 2017 planting season, we will have to wait until next year to see any real changes.

The Parish Council would like to invite local people to get involved and to this end if anyone reading this has, or knows someone who has any plants that they could split this autumn, prepared to propagate seeds or cuttings ready for next spring, maybe purchase individual plants for the scheme or anyone willing to make a private donation as a sponsor for a part of the garden, would they be so kind as to contact one of the Councillors or the Clerk to the Council with their offers. Once we know what's being offered we can allocate a space for it in the new garden.

Perhaps for instance if you have a clump of perennial plants at the bottom of the garden and you can't do the physical splitting work yourself, but would still like to donate them, don't worry, contact the Council and we will try and find a willing volunteer to help out.

It is hoped that the students at Derby College, Broomfield College to you and I, will be able to produce computerised imagery for you to see what is being proposed and hopefully with your help, turn a pretty picture into reality to show visitors entering from the west, what a beautiful village we live in.

Watch this space.....and LODGS!!! Please contact the HW Parish Clerk on 01332 883 404 or [horsleywoodhouseparishcouncil@aol.com](mailto:horsleywoodhouseparishcouncil@aol.com).

**If you wish to contact us or put an article forward:** Please email Tania Pells (Editor) at [editorwudhusnews@gmail.com](mailto:editorwudhusnews@gmail.com).

**Publishing Deadlines:**  
**February/**  
**March 2018 –**  
**20<sup>th</sup> January**  
**2018 and**  
**April/May –**  
**20<sup>th</sup> March**  
**2018.**

# St Susanna's Parish Church

## December 2017

3<sup>rd</sup> at 6.30 pm – Evening Prayer  
 10<sup>th</sup> at 6.30 pm – Holy Communion  
 17<sup>th</sup> at 6.30 pm – Carol Service  
 24<sup>th</sup> at 3.30 pm – Christmas Eve Crib  
 Service for all ages

Monday 25<sup>th</sup> at 10.30 am – Christmas Day Holy Communion

31<sup>st</sup> at 10.00 am – Joint service at St Clements Holy Communion

## January 2018

7<sup>th</sup> at 6.30 pm – Evening Prayer  
 14<sup>th</sup> at 6.30 pm – Holy Communion  
 21<sup>st</sup> at 6.30 pm – Evening Prayer  
 28<sup>th</sup> at 10.30 am – Morning Prayer

### Dates for your Diary:

**Friday 1<sup>st</sup> December - Quiz in Church Hall.** Starts at 7.15 pm, £2.00 per person. Feel free to bring your own drinks and nibbles. Everyone welcome.

**Wednesday 13<sup>th</sup> December at 7.15 pm - Mince Pie and Carol Evening** £5.00 - Entertainment by Marlpool URC Theatre Co.

## Events and activities at the Church Hall - weekly programme:

Date	Activity	Contact details
Monday	7.00 to 8.15 pm Line Dancing	Megan 01159 326 217
Tuesday	5.00 to 9.30 pm United Response Disco	Michelle 07891 759 907
Thursday	5.30 & 7.30 pm Slimming World	Tracy 07821 616 372
Friday (commencing 5 <sup>th</sup> Jan 2018)	9.15 to 10.45 am Slimming World	Tracy 07821 616 372

If you are interested in booking the Church Hall for meetings, parties and other functions, or on behalf of Societies and Clubs, please contact Sheila Cullen (the Bookings Secretary) on 07803 158 235.

# Horsley Woodhouse Methodist Church

## December 2017

Sunday 3<sup>rd</sup> (Advent Sunday) – Service at 6.00 pm led by Revd Roy Queripel

Sunday 10<sup>th</sup> at 6.00 pm – Service with Holy Communion led by Revd Judi Smart

Sunday 17<sup>th</sup>

at 10.30 am – Christingle & Gift Service led by Mrs Carol Warren. Come and bring the family. (Monetary gifts for the Air Ambulance)

at 6.00 pm – Carol Service led by members of our congregation. You will be most welcome.

Sunday 24<sup>th</sup> (Christmas Eve) – No Service

Monday 25<sup>th</sup> (Christmas Day) – Service at **9.30 am** led by Revd Judi Smart

Sunday 31<sup>st</sup> (New Year’s Eve) – Service at **2.30 pm** led by Mrs Pam Nelson

**Minister:** Revd  
Judi Smart  
Tel: 01332 781 296

**Church Contact:**  
Mrs Phyllis Shaw  
Tel: 01332 880 083

## January 2018

Sunday 7<sup>th</sup> at 6.00 pm – Service led by Mrs Maggie Davidson

Sunday 14<sup>th</sup> at 6.00 pm – Covenant Service with Holy Communion led by Revd Judi Smart

Sunday 21<sup>st</sup> at 6.00 pm – Service led by Revd Stephen Pratt

Sunday 28<sup>th</sup> at 6.00 pm – Service led by Revd Robert Foster



**Please note that our Evening Services will be starting at 6.00 pm, not 6.15 pm.**

\*\*\*\*\*

**Carols & Buffet – Tuesday 12<sup>th</sup> December at 7.00 pm.** Free Admission. Donations for our Church funds. Bring & Share Buffet. Raffle. Come and sing your favourite carols. Entertainment. All are welcome to join with us.

The Beetle Drive, plus donations, raised £205 for our church funds. Grateful thanks to those who participated.

Harvest Weekend – Grateful thanks to all who helped and supported our Harvest Services and Supper. The Gifts and Goods were gratefully received by the Padley Centre.

\*\*\*\*\*

## **Belle**

**Belle has been missing since 14<sup>th</sup> October 2017 in Horsley Woodhouse Main Street.**

Belle has been chipped but has no collar due to her removing it on numerous occasions.

Belle is 6yrs old, with multi tone Brown long hair. Please help find Belle by looking in garden sheds and garages.

**Please contact: Julie Howes 07949 425 936**



## Local clubs, community groups and societies



### Jog Derbyshire

Horsley Woodhouse Joggers meet every Thursday at the Church Hall at 7.00 pm. It is a group for absolute beginners or those returning to jogging after a break. For anyone who wants more details please contact Sam Draper by phone 07891 571 488 or email: [santhadraper@live.com](mailto:samanthadraper@live.com).

### Orchard Group

We meet every fortnight at the Orchard Centre on Tuesdays 2.00 to 4.00 pm. Please contact Mavis Thomson for more details on 01332 882 985.

### Scouts, Cubs and Beavers

Scouts (10 ½-14 years) Monday – 7.00 - 8:30 pm  
Cubs Scouts (8-10½ years) Wednesday – 6:30 - 8.00 pm  
Beaver Scouts (6-8 years) Thursday – 6.00 - 7.00 pm

Please contact Ian Britton, GSL, 1<sup>st</sup> Sitwell Scout Group on:  
Mob: 07847 207 756

Email:

[gsl@1stsitwellscoutgroup.co.uk](mailto:gsl@1stsitwellscoutgroup.co.uk)

Web: [www.1stsitwellscoutgroup.co.uk](http://www.1stsitwellscoutgroup.co.uk)

### Whist Drive

Meet every Friday night at 7.00 pm at the British Legion - contact Malcolm Parkin for more details 01332 880 160.

**The Mobile Library** will be in Horsley Woodhouse on Friday 22<sup>nd</sup> December 2017 & Friday 26<sup>th</sup> January 2018 at the following locations and times:

- Main Street Post Office 11.10 am – 12.00 pm
- Fairfield Road – 12.05 pm – 12.30 pm

### Over 60's Club - at the British Legion Hall

The Club continues to meet alternate Tuesdays at 2.00 pm in the Royal British Legion Hall, everyone welcome.

2017 draws to its close and we look back on an eventful year. All the Club outings went well and we had no problems on these summer days, the weather was kind and the majority enjoyed their days away.

Planning is now ongoing for the 2018 excursions and we are trying to source some new venues.

One pleasing factor has been the number of new members which

compensates for the sad loss of several of our older people who passed away during 2017.

The Christmas lunch gets nearer, 5<sup>th</sup> December when we visit our good friends at Eckington where a warm welcome is always assured. Then the final party and buffet on 19<sup>th</sup> December when David Potter will entertain with music and a few laughs bringing the year of good community fellowship to its close.

Happy Christmas and good health in the New Year to all our members.

Don Barham, Hon Secretary

## Ladies Group - at the British Legion Hall

The Committee would like to thank all Members new and old for attending and supporting the Ladies Group throughout this year. Sadly we have lost a number of dear Members this year, Cynthia and Pem, who contributed greatly over the years, they will be remembered. Other Members have also sadly lost partners this year including Nancy, Judy and Ann. Our thoughts are with them. We would like to wish all a Happy Christmas and Healthy New Year for 2018.

### The next meetings are:

- December 7<sup>th</sup> - which includes our Christmas Meal at Denby Lodge starting at 6.30 pm.
- January 2018 there is no meeting
- February is on Thursday 1<sup>st</sup> start time 7.15 pm, agenda to be confirmed in the next Wudhus News.

New and existing Members are all welcome.

Terrina Girling, Member

## Horsley Woodhouse and Smalley Royal British Legion

The 2017 Remembrance period is now behind us, once again the Branch did its duty in remembering the village men who didn't come home from the two World Wars. The 11 o'clock ceremony on Sunday 12<sup>th</sup> November was well attended and it was good to see the number of young people involved. Martin led the service and spoke of the history of Europe which led to the situation we find ourselves in today. The Horsley Woodhouse branch would like to thank Martin for the sincere and moving way he spoke of our fallen comrades and also of the stoic attitude in which the civilian population responded to the indiscriminate

bombing by the Luftwaffe. Sunday night we led the service at the Methodist Church, beginning with Siegfried Sassoon's evocative poem "Memorial Plate", the names were read, homage paid, and after the silence the "Kohima Epitaph".

Thank you to the Horsley Woodhouse and Smalley villagers, for their generous support of the 2017 Poppy Appeal.

The Memorial Hall is now in its 61<sup>st</sup> year, a tribute to the quality product turned out by Vic Hallam's workforce at Langley Mill. It's been checked for asbestos, electrical wiring and had its fire risk assessment done during 2017 and is ready for

whatever the future holds.

Finally a very Happy Christmas and healthy New Year to all our members and supporters.

Don Barham



## Camera Club

Dates for your diary

Forthcoming meetings at

The Old Oak Pub

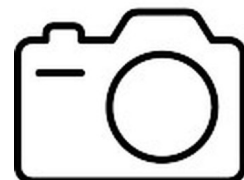
Tuesday 12<sup>th</sup> December 2017

Tuesday 9<sup>th</sup> January 2018

Tuesday 13<sup>th</sup> February 2018

at 7.30 pm.

Come along and join in



# FUNNIES – IT’S NEARLY CHRISTMAS

Q - What did the guest sing at the Eskimo's Christmas party?

A - Freeze a jolly good fellow!

Q - What does Father Christmas write on his Christmas cards?

A - ABCDEFGHIJKMN  
OPQRSTUVWXYZ  
(No-L) (NO-L !!)

Santa Claus has the right idea. Visit people only once a year.

The main reason Santa is so jolly is he knows where all the bad girls live.

Christmas has been cancelled! And it's your fault because I told Santa you had been good and now he's in hospital with

cracked ribs through laughing.

When you stop believing in Santa Claus is when you start getting clothes for Christmas.

You do know what would have happened if it had been three wise WOMEN instead of men, don't you? They would have asked for directions, arrived on time, helped deliver the baby, cleaned the stable, made a casserole, and brought disposable nappies as gifts! *(Written by a woman)*

Why do we have an Angel on top of the Christmas tree?

Because one year Santa was late getting up and then missed his breakfast. His mood didn't get any better when he went outside to find only half the presents were wrapped and the reindeers weren't ready. An Angel came by dragging a Christmas Tree and asked Santa were to put it.

And that is why we now have an Angel on top of the tree!!

***And Finally***  
**It is time for the carols,**  
**It is time for a cheer,**  
**For wishing the good things for all Wudhus folk,**  
**All through the New Year!**



## **SHAKE YOUR BOOTIES!**

**LINE DANCING EVERY MONDAY**

**H.W. Church Hall**

**7.00 to 8.15 pm**

**£3.00**

**Music, exercise and friends**

**YEEE-HA!**



Merry  
Christmas  
and a  
Happy New  
Year from  
the Wudhus  
News



# Councillor Kevin Buttery – Keeping you Updated

The Boundary Commission for England has launched its third and final consultation on changes to parliamentary constituencies, intended to come into effect in 2022. This would see the total number of MP's across the UK reduced from 650 to 600. You can view the proposed changes on [www.bce2018.org.uk](http://www.bce2018.org.uk) and have your say on what is being proposed. **Consultation closes on the 11<sup>th</sup> December 2017.**

Amber Valley Borough Council published its Pre-Submission Local Plan on the 2<sup>nd</sup> November for a 6-week public consultation period. The Local Plan is a key strategic document in shaping the future growth of Amber Valley in respect of housing and the local economy. This is another opportunity for you to pass comment on the proposals. At the end of the consultation period, the Council will submit the Local Plan to the Secretary of State, together with any comments that you make. A Planning Inspector will then be appointed to undertake an independent examination of the Plan.

Please note, just because a site is included in the Local Plan, does not mean it will definitely be built on. Plus, any site not included, could still come forward at any time. All the sites included will still be subject to a separate detailed planning application before any homes are built. **Details of the Local Plan can be found on the Amber Valley Borough Council website, or at Belper, Heanor or**

## Ripley Library and AVBC Town Hall.

Representatives from Derbyshire County Council have recently visited China to help showcase Derbyshire at the China International Industry Fair. To put this into perspective, China is now the UK's seventh biggest export market, with exports to China topping £10bn in the first half of the year. With 20% of those exports coming from the East Midlands.

The Chinese visitor market is worth £586m to the UK economy and is set to increase to £1bn over the next three years. Chatsworth and the Peak District already attracts many Chinese visitors. Belper is part of a World Heritage Site, which could play a role in attracting overseas visitors to Amber Valley.

Temperatures are dropping and winter will soon be upon us. The Council provides 24 hour cover to respond to weather conditions. They tend to pre-treat before bad weather hits, with the priority being 'A' Roads, heavily used 'B' Roads, major bus routes etc. Again, snow information, school closures and tips on how to keep warm are all available on the Derbyshire County Council's website. Plus, you can check which roads are on gritting routes and when they were last gritted. Please note there are over 1,000 miles of primary routes and 550 miles of secondary routes, so if we get blanket snow throughout Derbyshire all at the

same time, that will present challenges.

I expect all the street lights in Horsley Woodhouse to be converted to LED next year. Some lampposts will need to be replaced. Unfortunately, if those due to be replaced stop working prior to being replaced, they won't be repaired. Conversion to LED street lighting does provide energy savings of around 60% and they should last years longer than the traditional sodium bulbs, thus providing further savings on maintenance.

In respect of potholes and road defects, please use the [www.derbyshire.gov.uk](http://www.derbyshire.gov.uk) website to report them, under the **Transport and Roads Section.**

There are photographs to assist in identifying the type of defect, which speeds up the response. There is an engineering criteria which is used to ensure they are repaired on a priority basis, so not everyone reported will be classed as needing immediate repair. This time last year, there were 2,515 faults awaiting repair. With providing additional funding and looking at the way we do things, we have reduced this down to 539 faults, but get additional reports on a daily basis, so it is still a significant challenge.

**If there is an issue I can help you with, please contact me on 01332 781 092 or [kevin.buttery@derbyshire.gov.uk](mailto:kevin.buttery@derbyshire.gov.uk).**

## DERBYSHIRE CONNECT SHOPPING BUSES TAKE TO THE ROAD

New bus services funded by Derbyshire County Council have taken to the road – and they're free for Gold Card holders. Derbyshire Connect 'shopping' buses went into service on Monday 2<sup>nd</sup> October. They replace the Dial-a-Bus (DAB) services previously run on behalf of the Council by the county's six community transport groups.

The new Derbyshire Connect minibus services will initially operate in the same way as the old-style DAB services. They will run door-to-door picking up passengers from home and taking them to an agreed destination – such as local shops, the bank, post office, chemist or supermarket.

**Every community in Derbyshire will have the opportunity for the weekly shopping trip. Gold Card holders can travel free-of-charge after 9.30 am – previously they paid a £3.00 flat rate return fare.**

Derbyshire Connect shopping buses are being run by Ashbourne Community Transport in the south and west of the county and Community Transport for Town and County (CT4TC) in the north and east.

### NEW HEALTH APPOINTMENT SERVICE ALSO STARTS

The re-named Derbyshire Connect Active Travel services also started at the same time to take people to healthcare-related appointments. They take people by car, rather than minibus, to medical appointments and are being run by various organisations on behalf of the Council.

South Derbyshire Community Volunteers Service, based in Swadlincote, is providing journeys to medical appointments in South Derbyshire and in the south of the Derbyshire Dales. Ashbourne Community Transport, Erewash Community Transport, based in Ilkeston, and Community Transport Swadlincote are running services to healthcare appointments in Amber Valley and Erewash.

The scheme, which is currently known as aCTive Travel, is a paid for service. Users will continue to pay for the service, but fees may vary from those currently charged. Gold Cards cannot be used.

**For more information and details on how to book [www.derbyshire.gov.uk/derbyshireconnect](http://www.derbyshire.gov.uk/derbyshireconnect).**

*For media enquiries please contact the press office on 01629 538 205.*



## Friends of HWPS

Horsley Woodhouse Pre-school has recently been inspected by OFSTED and has been awarded a 'GOOD' rating which is a fantastic achievement. As a Parent, Grand Parent, or Carer of a child who attends the pre-school we can rest assured that our children are given the best early years education to enable them to reach their full potential during their time at Pre-school.

### What would happen if this Pre-school had to close due to lack of support from us all?

**It is a very real possibility now that the Pre-School will need to close early on in the New Year** if we are unable to gather together and provide the pre-school with a committee or as it will be known Friends of HWPS. You do not have to be a parent or have a child at the pre-school to support us, maybe you have a specific skill you think would help us, for example we are in need of a secretary and support with our accounts, or maybe you make great cakes!

We need to ensure our children can continue to attend; they need consistency, friendships, and their learning journey to continue!

Please don't think that someone else will do it or that you have no time at all to spare. At the last meeting there was one parent in attendance. An all time low. The time is now! The first meeting of Friends of HWPS was held on Wednesday 29<sup>th</sup> November at the pre-school, Methodist Church Hall.

### What will it mean to be a part of Friends of HWPS?

Think of it as just that – being a friend – that you would help out at their child's party, or make some cakes for fund raisers, share ideas and help develop the pre-school. You don't have to speak out in front of others, you don't need to do anything you don't enjoy, what we need is lots of friends, and with that will come different skills to help us flourish as a group. It might even be fun?! Let's find out!

**For more information, please call 07969 964 842.**

## Hire the Church Hall

FAMILY FUNCTIONS? PARTIES? AMATEUR DRAMATICS? FUNDRAISING? MEALS? BUFFETS? CLUBS & SOCIETIES? DANCES & DANCE CLASSES? CORPORATE FUNCTIONS? SEMINARS?

There are two main rooms. The **Sitwell Room** seats 80 people, has a sprung dance floor and a very good sized stage. This room is ideal for stage productions, concerts and presentations. **The Meeting Room** is well equipped with tables and chairs for meetings and smaller functions. It has a large serving hatch which accesses the kitchen. The facility has a fully equipped kitchen, is gas central heated, is wheelchair accessible and includes onsite parking. The hiring rates are reasonable and competitive.

**If you'd like more details, please give Sheila a call on 07803 158 235 and she will be pleased to help you.**

CRAFTING GET TOGETHERS AND CLASSES? MEETINGS? COFFEE MORNINGS? QUIZZES?

# Horsley Woodhouse Parish Council

Reports from  
October &  
November  
2017  
Parish  
Council  
meeting

The Safer  
Neighbourhood  
Team provides  
up to date  
information on  
twitter  
@HeanorRuralS  
NT and you can  
email the team  
on  
[ripley.neighbourhoods@derbyshire.pnn.police.uk](mailto:ripley.neighbourhoods@derbyshire.pnn.police.uk)

## October:

- Broomfield College students will be sowing grass seed on the land opposite the Doctors and will then produce a planting scheme for the Parish Council to approve.
- A plaque dedicated to Cllr Lancashire in appreciation of his loyal and dedicated service to Horsley Woodhouse Parish Council is to be placed on the seat near the Millennium Wall.
- The British Legion lamp post poppies will be put up on 28<sup>th</sup> October.
- The planters will be replanted with the winter flowering plants by mid-October.
- The Council will be sponsoring the **Festive Street Scene Competition (see back page for more details)**.

The Council will be participating in the Derbyshire County Council Snow Warden Scheme this year and are looking for volunteers to help in clearing snow if required this winter, if you wish to volunteer please email [horsleywoodhouseparishcouncil@aol.com](mailto:horsleywoodhouseparishcouncil@aol.com).

## November:

The remaining part of the verge opposite the Doctors will be seeded on Friday 10<sup>th</sup> November, which will complete the grass seeding of this area. The skip will be removed by Sunday 12<sup>th</sup> November.

The Remembrance Day Service is on Sunday at 12<sup>th</sup> November 2017 – 10.00 am at St Susanna's Church.

### Planning - November:

AVA/2017/1115 - 226 Main Street

Rear Extension

No objections

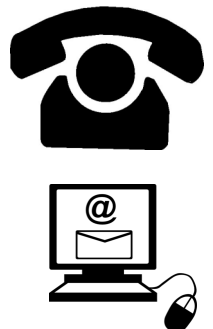
Proposed extension to the Doctors Surgery – the proposed extension to the Doctors surgery is on hold at the present time.

### Recreation Matters - November:

Horeston Recreation Ground - The proposed plans for the new play equipment will go out to public consultation, they will be on display at the Co-op and the Doctors towards the end of November/beginning of December; the Parish Council would welcome any comments.

## Parish Council Contact Details:

- Cllr K Seals (Chairman) – 01332 881 983
  - Cllr S McGuinness (Vice Chairman) – 07790 849 000
  - Cllr A Nathan – 07790 730 610
  - Cllr I Ratcliffe – 01332 781 872
  - Cllr S Till – 01332 881 739
  - Cllr J Whitmore – 01332 880 203
- 
- Mrs K Richardson (Parish Clerk) – 01332 883 404  
Email: [horsleywoodhouseparishcouncil@aol.com](mailto:horsleywoodhouseparishcouncil@aol.com)



**Dates of next two  
HW Parish Council  
meetings:**

The next two meetings will be on **Tuesday 5<sup>th</sup> December and Tuesday 9<sup>th</sup> January 2018 at 7.00 pm in the British Legion Hall**, all members of the parish are welcome to attend to observe the meeting and raise any issues.

# Do you have:

- A lung disease
- Kidney or heart disease
- Diabetes
- Another long term condition
- Or do you suffer from breathlessness?

Cold weather can make you more likely to catch a winter illness that could become very serious.

So even if it's just a cough or cold, seek advice from your pharmacist before it gets more serious.



**STAY WELL  
THIS WINTER**



## If you're pregnant, you need a flu jab now

Flu can cause serious complications for you and your baby – you could both get seriously ill.

The flu jab is the safest way to help protect you and your baby.

So don't put it off. Ask your GP, pharmacist or midwife about the free flu jab today.

It's free because you need it, however many months pregnant you are and however fit and healthy you might feel.



**STAY WELL  
THIS WINTER**

Flu **i**mmunisation

[nhs.uk/staywell](http://nhs.uk/staywell)



## Is your child aged 2 or 3?\* Help protect them from flu

Flu can be horrible for little children and if they get it, they can spread it around the whole family.

The flu vaccine is not an injection, just a quick and easy nasal spray.

It's also free. So don't put it off. Ask your GP about the free flu nasal spray for your child.



**STAY WELL  
THIS WINTER**

Flu **i**mmunisation

[nhs.uk/staywell](http://nhs.uk/staywell)

Rachel Keith, Nurse

\*Born between 1 September 2013 and 31 August 2015

Horsley  
Woodhouse  
Servicemen  
with known  
graves:

Acting Pilot  
Officer  
George  
Nicholson,  
Royal Air  
Force, Post  
WW2

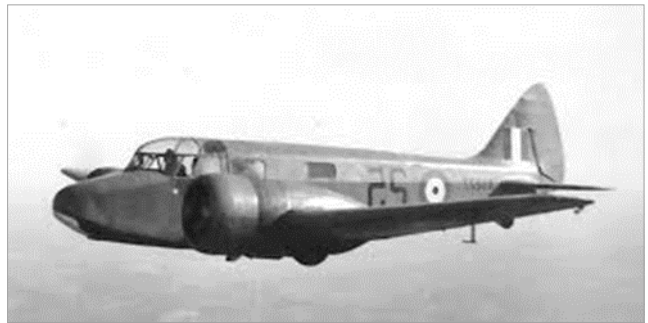
## “We Will Remember Them”

George was born in Horsley Woodhouse circa 1930. His parents, Harry and Florence Nicholson, lived, initially, part way down “Golden Valley”, before moving to “Rosegarth”, the large detached house adjacent to the Methodist Chapel, in the 1930’s. George was educated at the village Primary School and later at Herbert Strutt Grammar School, Belper. On leaving school, George worked for his father, Harry, who was the Water Engineer for the old Belper Rural District Council and ran a plumbing and building business based in Horsley Woodhouse.

George was called up for his National Service in 1952; following basic recruit training, he applied and was subsequently accepted for air-crew training. His early training was on the trusty Tiger Moth biplane at R.A.F. Wymeswold and on several occasions he did

a “beat up” of his home village, much to the dismay of his mother who was very much in fear of his new occupation. To complete his training, George moved on to the twin-engined Airspeed Oxford and was posted to R.A.F. Dalcross (now Inverness Airport) in Scotland. On his final

before making a practice forced landing, when his port wing tip clipped the ground, causing him to crash into a field on Barnato Farm, near Cromarty (Black Isle). Two farm workers, showing great courage, pulled George clear of the wreck, but, sadly, he was already dead, he was just 22 years old. His last



Airspeed Oxford

training flight from Dalcross, in an Oxford T Mk 2, Reg. HM745, on the 19th June 1953, prior to getting his “wings”, he was in the process of banking,

actions must have been to close all of the aircraft’s systems down, the subsequent Court of Enquiry



DH Tiger Moth

indicated that the crash procedure had been initiated, preventing fire, a high risk in view of the 100 octane aviation fuel inevitably swilling about. The enquiry's conclusion was "pilot error, possibly distracted by a large flock of sea birds in the vicinity of the landing site".

George had been due to go on leave the following weekend, he was to have been married on the Saturday, to a girl from the Ambergate area (the wedding would have been at

Ambergate). He was buried in Horsley Woodhouse village cemetery, in the grave of his father Harry, who had been killed in a local accident some years before. A

representative from the R.A.F. (possibly his C.O.) attended his funeral. He rests some 25 yards from the grave of his mother and younger brother Jim. In addition, George's name appears on the walls of the



Armed Forces Memorial, National Memorial Arboretum, Alrewas, Staffordshire.

Per Ardua Ad Astra.

**Mick Barham (copyright 2017)**



## Horsley Woodhouse Walking Group

### December 2017

**Wed 6<sup>th</sup> Dec** – Denby Pottery & Marehay Hall circular (2.25 miles), meet at Denby Pottery car park at 9.45 am.

**Wed 13<sup>th</sup> Dec** – Ripley Greenway (2.25 miles), meet at Denby Pottery car park at 9.45 am, to take a bus to Ripley and walk back.

**Wed 20<sup>th</sup> Dec** – Denby Pottery & Ticknall Lane circular (1.5 to 2.5 miles), meet at Denby Village car park at 9.45 am.

**Wed 27<sup>th</sup> Dec** – Kilburn Loop circular (2.5 miles), meet at Kilburn car park at 9.45 am.

### January 2018

**Wed 3<sup>rd</sup> Jan** – Nutbrook Canal (3 miles), meet at Straw Bridge at 9.45 am.

**Wed 10<sup>th</sup> Jan** – Shipley County Park circular (2.5 miles), meet at Shipley Park Centre at 9.45 am.

**Wed 17<sup>th</sup> Jan** – Erewash Canal to Shipley Lock and back (3 miles), meet at Lidl Langley mill at 9.45 am.

**Wed 24<sup>th</sup> Jan** – Denby and Dumbles Lane (2.5 miles), meet at Denby Village car park at 9.45 am.

**Wed 31<sup>st</sup> Jan** – Horsley & Golf Club (2.5 miles), meet at Kilburn Car Park at 9.45 am.

For more information, contact Amanda Gowing 01773 841 428, Phil Brown 07854 132 612, Gordon McNeil 07740 243 825 or Owen Marshall 07800 542 689.

**If the weather conditions are bad the routes may be changed and the walk will only be cancelled if there is any ice.**



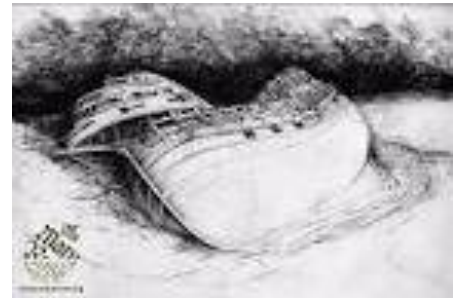
## 35<sup>th</sup> ANNIVERSARY OF RAISING OF THE MARY ROSE

On 11<sup>th</sup> October 2017 it was the 35<sup>th</sup> anniversary of raising the Mary Rose, King Henry VIII's flagship in 1545. This was a special celebration by the diving team that was formed in the summer of 1979 with the aim to excavate the Mary Rose from the Solent. The celebrations also included the supporting team of underwater archaeologists and photographers. I was the only diver from Derbyshire and Staffordshire who was part of the original Mary Rose diving team of that worked on the excavations between 1979 and 1982 to raise it on 11<sup>th</sup> October 1982. The reunion brought together divers, archaeologists, underwater photographers from as far as South Africa.



The Mary Rose was commissioned in 1509 shortly after King Henry VIII came to the throne. She was the flagship of England's first standing navy. The Mary Rose was designed with many innovative features and she reflects the development of England from a simple medieval state to a modern highly organised economy. The Mary Rose is a unique ship built for England's most famous kings at a pivotal time of history. After many years of service she was finally lost on 19<sup>th</sup> July 1545 as she was about to engage in battle with a large French invasion.

The ship had come to rest on her starboard side over a length of 32 m at a depth of 18 m, tides moving across the hull deposited their silts through the open gun ports and hatches on the upper side and sealed the contents of the ship within a reduced oxygen environment preserving thousands of objects.



In 1967 Sir Alexander McKee, military historian and diver from Southampton searched using hydrographical charts found historic wrecks including the position of the Mary Rose.

In January 1979 the Mary Rose Trust was formed and HRH Prince Charles who had previously dived on the site in 1975 agreed to be the president.

### Diving on the Mary Rose

The diving operation to raise the Mary Rose commenced in the summer of 1979. Divers peeled 5 mm layers of silt using trowels and



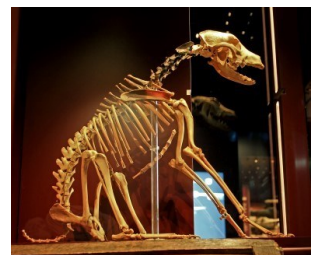
airlifts gently exposing delicate findings. (An air lift used compressed air from the surface to create suction which removed unwanted spoil down tide) excavation by an airlift exposed objects as fragile as wicker baskets, silk ribbon and plant remains.

During the excavations there was a huge drop in the underwater visibility particularly operating the air lifts. This resulted to nil visibility and halting the excavation until the silt dispersed allowing restarting the work. A dive at this depth would only permit 50 minutes underwater to excavate and collect any findings. All objects found were recorded as the excavated decks exposed the objects resting on them or rescued from the floor of the Solent. The position of each object was recorded before taking it out of the sea for the archaeologists to clean and identify it.

Amongst the objects recovered, there were chests belonging to some of the 500 men who lost their lives. A thorough study of the contents gave the identity of their jobs, the crew unable to read or write, and illustrated what was theirs by making a mark – a symbol unique to each sailor and can be seen on the finds displayed in the museum. On analysing the human remains found on the wreck, the modern advanced technology identified that the ships crew has fish for their last meal, the ships crew suffered from scurvy, the archers on had repetitive strain injury and there was no signs of tooth decay due to absence of sugars in the diet. The average age of the crew was 20 years old.



The ships dog “Hatch” may have been the carpenters pet as he was found near the doorway of his cabin, he would have to earn her keep as the Ships rat-catcher. The experts from Crufts suggested that he is the ancestor of the Manchester Terrier. The remains of Hatch can be seen in the Mary Rose Museum.



The Mary Rose museum has an impressive array of artifacts including wooden bowls, leather shoes, musical instruments and nit combs and many of the ships weapons, from long bows to two-tonne guns and stone shot. You can still smell the bitumen covered ropes rescued from the sea bed after 435 years.



The Museum is now open with unrestricted views of the hull from ‘bow to stern’ in all nine galleries and on three levels of the museum with its wealth of artefacts. The 35th anniversary of raising of the Mary Rose was particularly special as it opened a Capsule of History. Visiting this museum is walking through this living time capsule of 1545.



This article appears in the Wudhus News because I reside in Horsley Woodhouse and I am the only diver from Derbyshire and Staffordshire who formed the original Mary Rose Diving Team in the summer of 1979.



Merry Christmas





# Scouts, Cubs & Beavers

If you would like to join the Scout group, it will be great fun, please email me – [gsl@1stsitwellscoutgroup.co.uk](mailto:gsl@1stsitwellscoutgroup.co.uk).

## 1st Sitwell Scout Group had a Car Wash event

We had over 20 young people and a number of leaders, support group members and parents cleaning cars at Ilkeston's McDonalds. The two hour event raised £122, this will be divided up between Ronald McDonald House Charities and 1st Sitwell new roof funds.

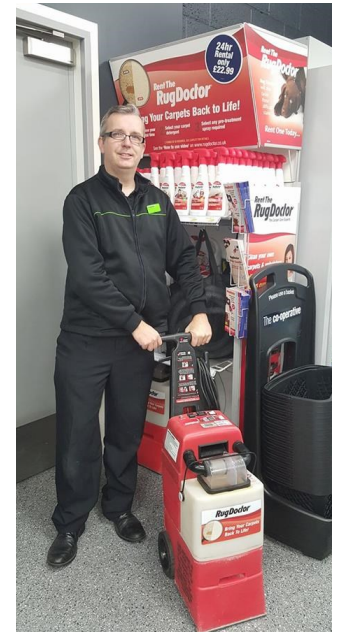
Many thanks to all who attended and had their car washed plus a big thanks to Ilkeston McDonalds for their invite.



Big thanks to all who were part of the **Remembrance Service**. Great turnout and great to see the Scout Group within the community that we are part of. Many thanks for the cakes too.



**Carpet cleaning day!** Last weekend some leaders and young people cleaned the carpet inside the hut, it had been two years since being cleaned and couldn't we tell. Thank you so much to the Co-op in Horsley Woodhouse for the loan of the Rug Doctor! It was amazing.



As part of their **Disability Awareness badge**, the Beavers had a couple of special visitors this week - Marye gave us all a fantastic demonstration of how her assistance dog Tilley helps with her disability.



## Some Cubs went caving

The group were offered 10 tickets by the county caving team and what fun that it was. They came out dirty and with big smiles. So did the leaders!!



**Wow we have been busy at 1st Sitwell again!!!**

Firstly many thanks to all who helped or came to the bonfire event, we look to have made well over £1,500 which is great. Many thanks to the Support Group, leaders and helpers for giving up there time again for free, some members started building the fire from 9.00 am.

Many thanks also to the Scouts for their support in the kitchen, running the games and of course to the people who came up Sunday morning to help tidy-up the Scout Hut and the field.

There are a lot of thanks in this text but there is a lot we have to be thankful for, remember just over four years ago the Scout Group was closed and the doors were locked. Many thanks to the Flower Shop for selling the tickets in advance. So again thanks to you all.

We will improve the poster for next year and say when the fire starts and the fireworks go off. Hope to see you all next year.



**Cubs had a sleepover last month**

This time the Cubs played board games, made paper aeroplanes, play the egg game, made cakes and did some sleeping too.



**The Scouts also did a sleepover** this month and walked from Drum Hill Camp Site in Little Eaton back to the hut before playing games inside the hut.

Many thanks to the leaders for giving up there time for free so the kids can have fun.



**Scouts went for a walk**

One team did the Kinder Challenge, this consisting of a 16 km walk. The Extreme is aimed at older Scouts, Explorer Scouts, Guides and members of Scout Network. It is a challenge of map reading and stamina in this exciting and rugged area of the Peak District. The Scouts did very well and well-done to Kev one of our Scout leaders for completing too. Hope they do it again next year

The other group went to Castleton Visitor Centre and did a 10 km walk around the area. Thanks to Stephen Till who gained a permit so the young people could do the walk in the area. If you would like to take part in events like this why not join the Scout team.

**The kitchen is done** – well nearly  
The floor is down . Thanks to Chris Wilcox for his support.





## Fundraising in aid of SANDS (Stillbirth and neonatal death charity) – 19<sup>th</sup> November 2017

A HUGH thank you to all the wonderful, and very generous friends and people of this amazing village and surrounding areas for the tremendous support they gave to Helen and Mark during this very “difficult time”.

People put their hands deeply in their pockets and gave very generous donations, bought raffle tickets and attended the fundraising event where they bid on the auction and bought cakes - to name but a few of the many ways they supported the fundraising.



What touched us both most were the cards, letters and stories of people who had borne similar experiences to Helen and Mark – so moving to read.

We had an amazing response on Sunday and it was a fantastic atmosphere for everyone who was able to be there and join in. Thank you for all the help in cleaning up afterwards too – a massive job after an event like this. What a great village hall we are so lucky to have (please support it with your various celebrations/functions).



**At present we think the final total which has been raised will be between £14,000 - £15,000 but there may be more to come.**

Thank you once again from the bottom of our hearts - this money will, in some small way, thank SANDS for the support they gave us all and to enable them to continue the wonderful work they do at times like this.

Hilary & Bryan Pope



## In Memory

The Horsley Woodhouse Parish Council Chairman and members of the Council expressed their sadness over the death of Cllr Simon Harrison on Wednesday 1<sup>st</sup> November 2017. Simon played a huge part in village life and will be an immense loss to the parish. Cllr Harrison's funeral took place on Friday 24<sup>th</sup> November at 2.00 pm at St Susanna's Parish Church.

## Stargazers – Lion in Horsley Woodhouse!

Stargazers Drama Group are busy preparing props and costumes for their traditional Pantomime to be performed in Horsley Woodhouse Church Hall on **22<sup>nd</sup> to 24<sup>th</sup> February 2018**. As the Aladdin story is set in China, we are making a giant Chinese Lion for one of the dance routines and **we still need brightly coloured lightweight fabric to be donated so that the lion can be truly spectacular**. If you can help please ring Christine on 01332 880 434.



Tickets go on sale in January at £5.00 and £3.00. Ring 01332 780 688 for reservations.

Ray Rippingale, Chair, Stargazers Drama Group

**Horsley Woodhouse Parish Church**

# Festive Evening

of

# Christmas Music

featuring Marlpool URC Theatre Co.

## in the Church Hall

### Wed 13th Dec 7.15pm

**Warm Mince Pies!!**

**Entrance £5.00**

**All proceeds to Church Funds**

### Meet your local councillor

Meet your local HW Parish Councillor for a drink and a chat. **Come along to The Old Oak Pub on Wednesday 20<sup>th</sup> December at 7.00 to 9.00 pm.** Enjoy a drink and have a chat about the things that concern you in your village. Your local council is here to listen.



# Christmas 2017

**A festive opportunity to decorate your home and create a Christmas**

**“VIEW FROM THE PAVEMENT”**

**The Parish Council will be judging the displays in the week before Christmas and awarding a prize to the MOST APPEALING display**

**AUTOMATIC ENTRY!**

**Happy Christmas**

**Everyone**