

JULY 2014

# THE WUDHUS NEWS

PUBLISHED BY AND ON BEHALF OF THE HORSLEY WOODHOUSE PARISH COUNCIL

## It's Carnival Time!!!

**Sat 19<sup>th</sup> July 2014 at Sitwell Recreation  
Ground**

**Parade starts at 1.00 pm from Four Lane Ends  
Admission: Adults £2.00  
and includes a  
programme with entry  
into the lucky prize  
draw. Children go free.**

It's nearly here folks!

The Horsley Woodhouse  
Community Association  
Committee has been hard at work over the past 12  
months organising this year's event.

The admission price for adults has increased slightly  
this year due to a decrease in funding. Although  
the committee has applied to more organisations  
this year, the amount of money received has  
reduced significantly. We would like to thank all  
the organisations, local residents and businesses  
that have contributed and a full list of names can  
be found in this year's brochure.

We have some great entertainment planned for the  
afternoon! Including: Fancy Dress, Heage Brass  
Band, Funky Phantomettes Street & Cheer  
Academy, Breaston Highlanders and Long Eaton  
Militaires Marching Band, Fun Dog Show, Children's  
Races, Climbing Wall, Fun Tug of War, Parade of  
Vintage Vehicles..the list goes on!

New additions this year are Nesta's Ark, an  
educational mobile Zoo, Andy Gilbert, a great  
Caricaturist, and for all round family fun, Terrier

Racing with the chance to let your family pet  
have a go too!

Tug of War will take place in the ring, teams of six  
(men, women, children and mixed family groups)  
are needed. Entry forms available at various  
points in the village, including the Post Office/  
Carolyn's Pantry, The Flower Shop, Woodhouse  
Stores, The Old Oak, The Sitwell Arms and  
Horsley Woodhouse Ex-Service and Working  
Men's Club or from the Secretary.

The Art & Craft tent returns after a positive  
response last year, we still have a few tables left  
for anyone wishing to book.

Entries for the Tug of War and the Art & Craft  
tent can be sent to [secretary.hwca@hotmail.com](mailto:secretary.hwca@hotmail.com)  
or Brackley View, 121a Main Street, Horsley  
Woodhouse.

Let's hope the weather is kind to us and get your  
bunting out to make the village look great too!

**The Horsley Woodhouse Community Association  
Committee invites you all to attend their AGM  
on the Thu 11<sup>th</sup> September 2014 at 7.30 pm,  
Royal British Legion Hall for feedback from this  
year's event and suggestions for next year.**



Vanessa Feeney, Secretary HWCA



## Horsley Woodhouse Walking Group

### July 2014

**Wed 2<sup>nd</sup> Jul** (10.00 am – midday) - Denby and Flamstead House 2.5 miles, meet at Denby Village car park at 10.00 am. *Those needing transport to meet at the working men's club at 9.45 am.*

**Wed 9<sup>th</sup> Jul** (9.45 am – 11.45 am) - Holbrook 3.5 miles, meet at Kilburn car park at 9.45 am.

**Wed 16<sup>th</sup> Jul** (10.00 am – midday) - Shipley Country Park 2.5 miles, meet at the Mapperley car park at 10.00 am. *Those needing transport to meet at the Working Men's Club at 9.45 am. This is a buggy friendly walk.*

**Wed 23<sup>rd</sup> Jul** (9.45 am – 11.30 am) - Woodhouse Circular 2 miles, meet at Horsley Woodhouse Working Men's Club at 9.45 am. *This is a buggy friendly walk.*

**Wed 30<sup>th</sup> Jul** (9.45 am – 11.45 am) - Stanley Common approximately 3.25 miles, meet at Horsley Woodhouse Working Men's Club at 9.45 am.

### August 2014

**Wed 6<sup>th</sup> Aug** (10.00 am – midday) - Denby Pottery to Park Hall 3.25 miles, meet at Denby Pottery car park at 10.00 am. *Those needing transport to meet at the working men's club at 9.45 am.*

For more information, contact Tor or Debbie on 01283 563 348 or Simon Harrison (walk leader) on 01332 780 450.

Full details can be found of all the walks on the Arthur Medical Centre web site [www.arthurmedicalcentre.co.uk/info.aspx?p=12](http://www.arthurmedicalcentre.co.uk/info.aspx?p=12)



### **Request for Community Support**

The Wudhus News would like to say a big thank you to all the villagers who volunteered to distribute it, after our request in the last edition. We now have a new volunteer on board.

Again many thanks.

### **Village Quiz**

Quiz in the Church Hall on  
Friday 11th July at 7.15 pm.  
£8 per table of 4

Hot Dogs available! but feel free to bring your own drinks and nibbles!

All proceeds in aid of Horsley Woodhouse Parish Church

All welcome

## 9 Main Street Garden Opening - Special Collection

Sunday 3<sup>rd</sup> August 2014

This year's N.G.S opening at 9 Main Street will be an occasion of mixed emotions. Those of you who are regular visitors will I'm sure, remember my young colleague and friend Alison Gobey, who had worked with me since 2005. Tragically we lost her to cancer in January, leaving her husband and 20 month old son bereft. We shall be making a special collection in her memory with the proceeds going to a charity nominated by her husband.

Opening hours on the day are 1.30 to 4.30 pm, the entry charge is £2.50 with accompanied children free. All areas of the garden are accessible to wheelchair users and dogs on leads are welcome. There will be, as usual, a plant stall and cream teas for sale.



Alison Gobey

Please join us if you can to help make this a memorable and enjoyable day for Alison Gobey's family.

Alison Napier

### If you wish to contact us or put an article forward:

If you would like to put forward any details to be included in the next edition of the Wudhus News please contact Tania Pells (Editor) at [editorwudhusnews@gmail.com](mailto:editorwudhusnews@gmail.com). **If you are holding a fund raiser, have some community news or you need support to write an article please get in touch.**

All articles and information submitted will be reviewed by the Parish Council before it can be approved. Unfortunately we cannot advertise businesses within the newsletter or print personal letters.

If you wish to use any material that is listed within the Wudhus News, please contact Tania Pells (Editor) on the above email address.

**Publishing Deadlines: Aug/Sep – 20<sup>th</sup> Jul 2014 and Oct/Nov – 20<sup>th</sup> Sep 2014.** Unfortunately any information received after the deadline will not be included but may go forward to the next edition.

Many thanks Tania Pells.

## ‘We Will Remember Them’

### Horsley Woodhouse Servicemen who have no known grave:

John Sutton was the son of Edmund Sutton of Weston Underwood, Derbyshire and husband to Hannah Sutton of Horsley Woodhouse

Records show that he served as a Private in the 1<sup>st</sup> Battalion South Staffordshire Regiment in the First World War, Service No. 18357. Walter Hall, the subject of my previous WWRT article, also served with the 1<sup>st</sup> Battalion South Staffs, as his Service No. was 18228, just 129 apart from John Sutton, it is clear that the two joined up at approximately the same time, most likely in 1914 or 1915; they may then, quite literally have “served together”.

The 1<sup>st</sup> Battalion had returned to England from South Africa following Britain’s declaration of war on Germany on the 4<sup>th</sup> August 1914. They arrived, in due course, in Belgium in October 1914 and would stay on the Western Front until late 1917 when they were deployed to Italy to aid the Italian resistance against Austria-Hungarian forces there. The Battalion’s war finished in Italy on the 14<sup>th</sup> November 1918 west of Udine.

The 1<sup>st</sup> Battalion South Staffordshire Regiment saw plenty of action on the Western Front fighting at the 1<sup>st</sup> Battle of Ypres (1914), Neuve Chapelle, Aubers Ridge, Festubert and 2<sup>nd</sup> Givenchy and Loos (all 1915) before being transferred to the 91<sup>st</sup> Brigade of the 7<sup>th</sup> Division.

As 1916 arrived, the British and French were planning joint offensives in France with a view to achieving “maximum gains”. Such plans were, however, dashed when the Germans struck first with a major offensive at Verdun (France) in February 1916. After initial German advances the battle shifted to a pattern of French defence holding off persistent attacks. The Germans renewed their efforts and pressed so hard at Verdun that a point was reached where it seemed that the French army might collapse in this vicinity. The situation was critical and the French called for assistance to avoid a major defeat at Verdun. Britain was in a difficult position, her regular army had been eroded by the battles of 1914 & 15, a new volunteer army was in existence in answer to Kitchener’s continued call, but it was not yet fully trained. No matter, “needs must”, this army would have to fight as the French began to doubt that they could hold on at Verdun beyond June. The situation also meant that any French participation in a major allied offensive would have to be “token only”; such was the lead up to the 1916 Battles of the Somme. The collective battles would take their name from the river Somme and the department of the Somme, a region that actually formed part of the old French province of Picardy, an area already familiar in British military history in terms of the ancient battlefields of Crecy and Agincourt. Now Picardy was to be the location for yet another epic battle, this time on an altogether more massive scale.

At this point in the war, the commander-in-chief of the British Army was General Sir Douglas Haig. Haig was a cavalryman and so, as the Somme offensive was basically an infantry attack, he deferred in the planning to his 4<sup>th</sup>

Army commander General Henry Rawlinson, an infantryman through and through. Rawlinson’s final plan involved both Fourth and Third Armies with General Gough’s cavalry used as



British infantry on the Somme



a “reserve force” to exploit matters in the event of a major infantry breakthrough. The plan included a week long artillery bombardment of the opposing German trenches and fortified village positions north of the Somme. The bombardment began on the 24<sup>th</sup> June 1916 and continued on until the opening infantry attack on the 1<sup>st</sup> July 1916. In addition to the artillery, a number of mines were blown under the German positions just before “zero hour”. The British attack went in on an 18 mile, roughly “L” shaped front from Gommecourt in the north down to Maricourt in the south, with the Albert/Bapaume road forming a central axis, Bapaume being an overall objective for the campaign. The attack met solid German resistance and the only definite British success, other than temporary gains, was at Fricourt and in the Mametz vicinity in the south. To the north, despite courageous efforts, the first day attack was a failure. The Germans had dug in deep in the higher ground and had not been shelled or mined out of existence; they had, instead, been quite efficient in bringing up and manning their machine guns. The 1<sup>st</sup> July cost the British almost 60,000 casualties with the dead numbering some 20,000; the shock of that first day would soon reach back to the towns and villages of Britain where curtains would be drawn in many, many streets.

After the first day, the Somme campaign continued in a series of battles including the first use of tanks in war at Flers-Courcelette (15<sup>th</sup> to 22<sup>nd</sup> September). Names like Beaumont Hamel, Serre, Delville Wood, Pozieres, Mouquet Farm, High Wood, Waterlot Farm would provide lasting name markers to the “wearing out” struggle. The Somme finally “ground to a halt” in November with the British still short of Bapaume and some original first day objectives still untaken. Overall British losses on the Somme in 1916 have been assessed at around 450,000.

Private John William Sutton was listed amongst the “missing” of the 1<sup>st</sup> July attack. The objective given to the 7<sup>th</sup> Division (part of XV corps of the British 4<sup>th</sup> Army) for that first day, was the capture of the German held village of Mametz lying to the south of the attack front. The fighting around Mametz on 1<sup>st</sup> July was fairly intense and the village was not secured until the afternoon. John Sutton died somewhere in this area; he has no known grave as his remains were never identified or recovered. He is commemorated on the Thiepval Memorial to the missing of the 1916 Somme battles, Pier 7, Face B. The memorial carries the names of more than 73,000 soldiers who “disappeared” in what remains the largest battle fought by the British Army. The memorial is sited close to the village of Thiepval and is one of the largest memorials on the Western Front; behind it is a cemetery containing equal numbers of “unknown” burials of French and British soldiers.

Thiepval itself, an original British objective of the 1<sup>st</sup> July, did not actually fall until September 1916.

It has been said that the Somme and later Passchendaele, were the hinges that swung a door shut on a generation. When you see the scale of the Thiepval Memorial and the many cemeteries dotted about the rolling farmland of the Somme region, it is not hard to see why.

Mick Barham (copyright)



The Thiepval Memorial to the missing of the Somme 1916

## Local clubs, community groups and societies

### Jog Derbyshire

Horsley Woodhouse Joggers meet every Thursday at the Church Hall at 7.00 pm. It is a group for absolute beginners or those returning to jogging after a break. For anyone who wants more details please contact Sam Draper by phone 07891 571 488 or email [samanthadraper@live.com](mailto:samanthadraper@live.com).

### Scouts, Cubs and Beavers

Beaver Scouts (6-8 years) Thursday - 6.00 -7.00 pm

Cubs Scouts (8-10½ years) Wednesday – 6:30-8.00 pm

Scouts (10 ½-14 years) Monday – 7.00 - 8:30 pm

Please contact Ian Britton, CSL, 1st Sitwell Cub Pack on:

Mob: 07847 207 756

E-mail: [cubs@1stsitwellscoutgroup.co.uk](mailto:cubs@1stsitwellscoutgroup.co.uk)

Web: [www.1stsitwellscoutgroup.co.uk](http://www.1stsitwellscoutgroup.co.uk)

### Orchard Group

We meet every fortnight at The Orchard Centre on Tuesdays 2.00 to 4.00 pm. Please contact Peggy Parry for more details on 01332 883 240.

### **British Legion**

The Branch continues to meet on the first Monday in the month (except for Bank Holidays, when the second Monday is preferred). We average seven or eight present which is reasonable for a small membership.

This year is a special year for the Legion, we are first and foremost about remembrance and the men of 1914-1918 plus the veterans of 1939-1945 should never be forgotten in this great community of ours. Without their service and sacrifice Great Britain would in all probability have been removed from the map.

The Legion is proud to represent all servicemen and women and support them at all times. Sadly as the hymn goes 'Time like an ever rolling stream, bears all its sons away', and so in 2014 we have only one W.W.2 man left in our ranks. When I joined the Legion in 1981 there were 15 in the Horsley Woodhouse branch.

A reminder that two talks are coming up in the Legion Memorial Hall:

- **Wed 2<sup>nd</sup> Jul** 2014 at 7.15 pm – Marine Engineer and Driver Mark Newbold. A crew member's experience of the sinking of H.M.S Coventry during the Falklands Campaign. Also his two years serving on the Royal Yacht Britannia.
- **Wed 6<sup>th</sup> Aug** at 7.15 pm - A talk by Michael Barham 'Never such innocence, The Western Front 1914-1918' - Open to all.

There will be refreshments, so come along, all welcome and support the Legion and help us to remember these historical events. Later in the year Nick Hopkins will be talking about 'Smalley boys and the Great War'. All Horsley Woodhouse boys attended Smalley Boys School until the 1950's and

we have had close ties with Smalley village for many years. Please support us and help to keep the Legion alive in our village.

Don Barham, Hon. Secretary

#### Ladies Group

The meeting on 5<sup>th</sup> June was an evening of laughter and entertainment, especially with our return guest speaker Barbara Daykin MBE. Barbara spoke about receiving her medal and how proud she was at meeting the Royal Family at Buckingham Palace.

Next Meetings:

**3<sup>rd</sup> July 2014** - meeting is replaced with a trip out to Willersley Castle Hotel, Cromford for a nice meal, all Ladies Group members are welcome, details and bookings are through Terrina. The coach will pick up everyone from the Horsley Woodhouse Post Office at 5.00 pm on the day.

**7<sup>th</sup> August 2014** at 7.15 pm in the British Legion. The guest speaker is Greta Davies who will be both talking on keeping a healthy lifestyle and also will be doing some very gentle exercises with us. Greta has been referred by our local GP's, from Ripley Leisure Centre.

All new members are welcome.

Terrina Girling, Committee Member

#### Horsley Woodhouse Over 60's Club

The over 60's club continues to meet alternative Tuesdays at 2.00 pm in the Legion Memorial Hall for dominoes, cards, bingo and a cup of tea. Everyone is welcome to join us.

The Bury Market outing went off smoothly, the weather was kind, the coach comfortable and the market was astonishing in its size and variety of goods and stalls. Its reputation of being the best market in the north of England is well founded. By the time this goes to press we shall have visited The Moorlands Crown carvery near Sheffield. Previous visits have been well received and we hope this will be in the same category.

July is carnival month, the 19<sup>th</sup> and the Club will be having a 'bottle stall'. The August outing is to Llandudno on Wed 20<sup>th</sup> Aug 2014 and just a few seats are available at the time of writing. Please contact Cilla (01332 882 208) or Don (01332 881 379).

**Remember these outings are open to all non-members and all are very welcome.**

Don Barham, Hon Secretary

#### Whist Drive

Meet every Friday night at 7.00 pm at the British Legion - contact Malcolm Parkin for more details 01332 880 160.

If you have a group or local club and you want to be included in this section please contact Tania Pells (Editor) on [editorwudhusnews@gmail.com](mailto:editorwudhusnews@gmail.com).

## Horsley Woodhouse Parish Council

### Recreation Matters - Sitwell Recreation Ground

Play equipment – Despite all assurances over the last few months, Play and Leisure have still not completed amendments to the play equipment as promised. Parish Clerk to contact Amber Valley Borough Council to ask for their assistance in ensuring Play & Leisure carry out all the necessary remedial work to the play equipment.

The Parish Clerk to ask Andrew Hall to cut the nettles and weeds back on the track up to the Sitwell Recreation Ground before the second week in July.

Due to the Council not owning the entrance track to the Recreation Ground no action will be taken regarding re-surfacing.

Police Matters - PSCO Vicky Hill will be leaving at the end of June, a replacement for Vicky has not yet been appointed. Parish Clerk to write to the Police to verify who the replacement is.

Planning - at the 6<sup>th</sup> May meeting a member of the public asked members if they would look favourably on a proposed outline planning application for approximately 55 houses on 8 acres of land at Dobholes Farm. At the 3<sup>rd</sup> June meeting an objection was raised by a resident who wished to raise his disapproval. As the application had not been formally placed the Parish Council could not comment.

### County Councillors Report:

- Cllr Buttery reported that he had given £1,000 out the Community Leadership Fund to the Scouts and also a contribution to Horsley Woodhouse Committee Association towards the carnival.
- The traffic lights at Four Lane Ends is being looked at and could take some time to get the sequencing correct.
- The core strategy at Amber Valley has been suspended for six months as there are various issues regarding housing still to be finalised.

### Action on outstanding issues:

- The stile at the bottom of Golden Valley has been amended, and is now the correct height.
- Notice Board for Recreation Ground/accident procedures for Recreation Grounds and Parish Council Notice Boards are to be put on the agenda for next meeting.

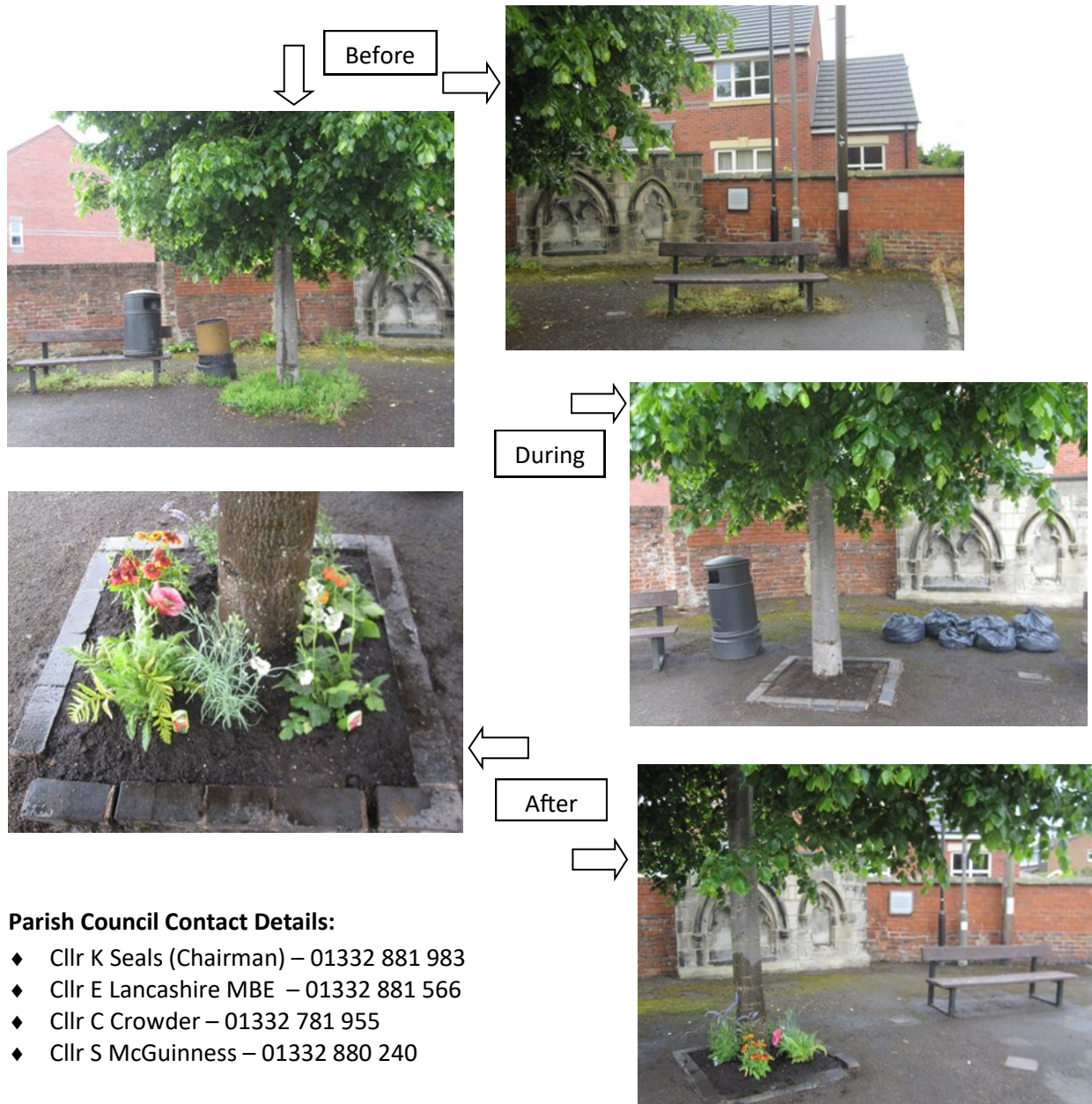
Election of Chairman and Vice-Chair - Cllr Karen Seals was elected as Chairman of the Council for the ensuing year at the 6<sup>th</sup> May meeting. The Vice-Chair position has been deferred.

### Co-Option of new members to the Parish Council:

- Mr Stephen Till and Mrs Julie Whitmore addressed the council outlining their reasons for wanting to be a Parish Councillor. Members agreed that Mr Till and Mrs Whitmore be co-opted on to the Parish Council.
- Mr Till and Mrs Whitmore both signed the declaration of acceptance of office for Parish Council.



Community support - Local resident Hillary Pope spent several hours clearing away rubbish and weeds at Millennium Wall and has planted various plants. A big thank you to Hilary for making the area look more attractive and a pleasant place to sit.



**Parish Council Contact Details:**

- ◆ Cllr K Seals (Chairman) – 01332 881 983
- ◆ Cllr E Lancashire MBE – 01332 881 566
- ◆ Cllr C Crowder – 01332 781 955
- ◆ Cllr S McGuinness – 01332 880 240

**New members of the parish council:**

- ◆ Cllr I Ratcliffe – 01332 781 872
- ◆ Cllr S Harrison – 01332 780 450
- ◆ Cllr S Till – 01332 881 739
- ◆ Cllr J Whitmore – 01332 880 203
  
- ◆ Mrs K Richardson (Parish Clerk) – 01332 883 404  
 Email: [horsleywoodhouseparishcouncil@aol.com](mailto:horsleywoodhouseparishcouncil@aol.com)

Date of next meeting – Tue 1<sup>st</sup> July 2014 at 7.00 pm in the Church Hall. All members of the public are welcome to observe the meeting and raise any issues.

## St Susanna's Parish Church

### July 2014

Sun 6<sup>th</sup> at 4.00 pm – Heanor Deanery Confirmation Service at St James, Codnor  
(No Horsley Woodhouse Service)

Sun 13<sup>th</sup> at 6.30 pm – Holy Communion

Sun 20<sup>th</sup> at 6.30 pm – Evening Prayer

Sun 27<sup>th</sup> at 10.30 am – Morning Prayer

### Date for your diary:

Quiz night in the Church Hall on Fri 11<sup>th</sup> July at 7.15 pm. £8 per table of 4. Hot Dogs available! but feel free to bring your own drinks and nibbles! ALL WELCOME!

### Events and activities at the Church Hall

Currently the weekly programme of activities open to the public in the Church Hall is:

- ◆ Monday - 19.00 to 20.00 Line Dancing (contact Megan on 0115 9326 217)
- ◆ Tuesday - Tae-Kwon-do 18.30 to 20.30 (contact Shirley on 07790 812 468 or 01332 880 865)
- ◆ Thursday - Boogie Babies (dance class for toddlers) 10.00 to 11.00 (contact Lucy on 07870 198 046)
- ◆ The Over 55's Keep Fit class which has been run on a Wednesday 13.30 to 14.30 may resume if sufficient people are interested.

Anyone interested in booking the Hall for a party or other celebration or for regular meetings of their club or society may contact Andrew Shaw (Churchwarden, St Susanna's Church) on 01332 883 124 or 07790 012 606.

## Horsley Woodhouse Methodist Church

### SERVICES

#### July 2014

Sun 6<sup>th</sup> at 6.15 pm - Service led by Revd Jane Harris

Sun 13<sup>th</sup> at 6.15 pm - Service led by Revd Dick Styles

Sun 20<sup>th</sup>

at 10.30 am - Service led by Mrs Glenis Edwards

at 6.15 pm - Service with Holy Communion led by Revd Kenneth Cupit

Sun 27<sup>th</sup> at 6.15 pm – Sankey Service led by our own members

### Ministers:

Revd Judi Smart - Tel: 01332 781 296

\*\*\*\*\*

**COFFEE MORNING** for Christian Aid held on Sat 17<sup>th</sup> May raised £331.75. Grateful thanks to all who supported this event.

### Date for your diary:

**BIBLE STUDY** We hold a Bible Study, led by Revd Judi Smart, once a month on a Thursday afternoon at 3 pm. It is usually on the last Thursday of the month but this can vary. We are studying St John's Gospel. Anyone is welcome to come but please check the dates with Phyllis (Tel: 01332 880 083) beforehand.

## Smalley Tennis Club

The tennis courts in Smalley are a local facility just up the road: a walk away from you, and a fantastic hidden gem for the family. Surrounded by trees and fields on one side and the prestigious Stainsby Hall Cricket Club on the other. There is a tarmac car park - should you not want to walk the short distance there, maybe you are dropping in for a game after work? The entrance to the facility is easily missed, hidden slightly from the road (A609) so look out and be careful not to miss it!

We are lucky enough to have professional hard and soft courts that are continually maintained - several times a week in the summer, you only need a racket and a tennis ball, you don't need to be professional tennis players, that comes with practice!

We have a great coach – should you want professional advice for yourselves or your children: Simon Klugman provides lessons for small groups on Sundays, children/teenagers/adults all welcome, see our website for more information: <http://www.smalleystennis.net/coaching.html>. To contact Simon either visit our website or telephone: 07791 696 401.



You can often just arrive at the courts without booking and find a court free but to guarantee a game at a specific time however, please use our website booking system: <http://www.smalleystennis.net/about.html>. **Please note the courts are locked you must bring your key!**

### Membership and Obtaining your Key

We would like to encourage the use of our great tennis facilities and thereby maintain their availability for future use. On behalf of the committee, we would like to invite you to join our wonderful local family Tennis Club. The fee is just £58 for a whole year of tennis for your entire family/household.

### AGM

Our annual general meeting on 12<sup>th</sup> May 2014 saw several new members join and want to help the committee, the more members of the committee the better. **PLEASE** would you consider joining the committee – it needs 10 people to function properly and the workload is then spread out and very light. All that is needed from committee members is attendance at about five meetings per year, and potentially being responsible for an area of running the club. You don't have to play tennis to be a member of the committee just have a passion to keep the facilities available for the benefit of the community. The roles are:

- Vice Chair
- Membership
- Plus general committee members

We have a thriving club with about 60 active local household memberships, the courts are in great condition and an adequate bank account to cover running costs and a fund for maintenance. There will be an inaugural meeting now the AGM has taken place but to date this has not been arranged. Please contact for details. Without people volunteering to join the committee, the club would in effect become closed to new members as no one would be able to carry out the necessary processes for this!

So please reply and contact either Andy Taylor: [andy@airvenduk.com](mailto:andy@airvenduk.com) (text only: 07870 560 814) or Brigette Barnes: [Brige@barnesfamily.org.uk](mailto:Brige@barnesfamily.org.uk) (text only: 07971 272 181).



## 1st Sitwell Cub, Beaver and Scouts

1st Sitwell Scout Group did a "thank you" event for the kids who attended the district promise renew parade last May. The Scout members did very well and they had a big smile to the Scout group who had 36 kids, eight leaders and one young leader at the parade; that's 45 more than last year!

The group took the Beaver and Cub section to Roller World in Derby. For some of the kids it was their first time they had been skating, by the end of the event the kids were able to skate around the large arena.

The Scout troop will be going to Drumhill campsite to do either archery or rifle shooting.



Cubs and Beavers after the event

### Funding

Many thanks to Cllr Kevin Buttery who via the "Members Community Leadership Fund" has donated £1,000 to 1st Sitwell Scout Group, this money is going towards improving the ageing heating system at



Cllr Kevin Buttery and Christopher Wulfert (age 6)

the HQ and the continual work the Scout group can offer to the kids in the local community.

The Scout group was pleased to take up the offer of a 50 year lease from the Horsley Woodhouse Parish Council for the land which the HQ is

standing on. This will also allow the Scout group to obtain more funding to improve the HQ on Sitwell Recreation Ground, Horsley Woodhouse.



Cllr Karen Seals (Chair of the Parish Council) and Cllr Colin Crowder plus Ian Britton CSL

The Group is now able to complete the requirements to be awarded a 'Large Grant' from UK Coal, for new windows and doors which the Scout Hut badly needs. The group was also successful to win a grant from the Parish Council for light covers to be installed in the main hall of the Scout Hut. Safety is a priority as well as developing the program that the Scout group can offer to the kids from around the local area.

Tim Hollingshurst one of 1st Sitwell Scout Group's Beaver and Cub parents has done Dirty Weekend! Not what you think!!! A Dirty Weekend doing a Rat Race. It was a 20 miles long, 200 obstacle course (apparently the largest obstacle course in the world!). He was sponsored for this event and has raised over £600 for the Scout group. One of the questions from the kids was how long did it take to clean up? Tim's reply was nearly as long as the five hours it took doing the course!

Many thanks to Tim – the money raised will go on new tables in the Hut and more needed camping equipment so the kids can go camping. Again well done Tim.

**Community Week**

1st Sitwell Cub and Beaver sections took part in the scouting movements “Community Week” by doing a litter pick around



Beavers and Cubs sections during the community week

The Cub Section walked around the area of Horsley Woodhouse while the Beaver section walked around the Sitwell Recreation Ground. The Scout group collected two full bags of rubbish which was taken home by the leaders and recycled where possible.

Horsley Woodhouse. It gives the Scout group the opportunity to demonstrate the benefits and impact Scouting has on individuals and the social return to communities.



Cubs and Beavers after the event



**1st Sitwell Cubs and Scouts had their first camp since re-opening**

The Cub and Scout section went to Oaks in Charnwood, near Shepshed last month. Over 24 kids and leaders went on camp doing many activities from rifle shooting, climbing, grass sledging, cooking on an open fire to campfire singing.



Charlotte Last (age 9) from the Cub Pack climbing at camp

The Cub section closed its doors in 2013 due to lack of leaders, now the group has leaders and over 55 kids within the group. The group is still on the lookout for more leaders, especially Beaver leaders.

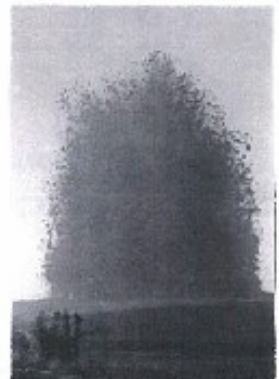
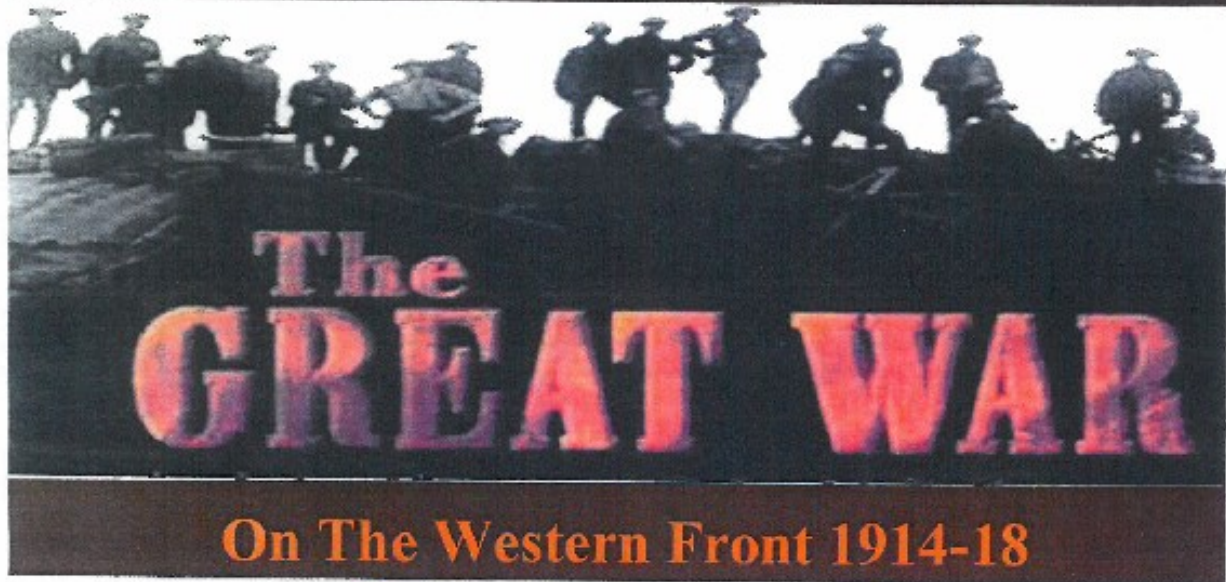
The whole group including the Beaver section will be camping again in July before taking part in the Horsley Woodhouse Carnival on the 19<sup>th</sup> July 2014.

1st Sitwell Scout Group HQ is located on the same field as the carnival, Sitwell Recreation Grounds, off Church Lane, Horsley Woodhouse. It is open to the surrounding areas from Heanor, Shipley Park, Marlpool, Smalley and of course Horsley Woodhouse.

Anyone wanting more information on how to join the Scouting movement or become an adult leader/helper should visit [www.1stsitwellscoutgroup.co.uk](http://www.1stsitwellscoutgroup.co.uk).



**“Never Such Innocence”  
A look back at:**



**A TALK TO BE GIVEN BY  
MICHAEL BARHAM**

**ON WEDNESDAY 6<sup>th</sup> OF AUGUST 2014**

**COMMENCING 7.15 pm AT THE:**

**ROYAL BRITISH LEGION  
MEMORIAL HALL  
HORSLEY WOODHOUSE**

**ALL WELCOME**

